

---

CATALOGUE

Cylindrical Antivibration Mountings		Pag. 4
Cylindrical Antivibration Mountings		Pag. 5
Cylindrical Antivibration Mountings		Pag. 6
Cylindrical Antivibration Mountings		Pag. 7
Cylindrical Antivibration Mountings		Pag. 8
Cylindrical Antivibration Mountings		Pag. 9
Cylindrical Antivibration Mountings		Pag. 10
Conical Antivibration Mountings		Pag. 10
“Sand-Glass” Antivibration Mountings		Pag. 11
Antivibration Bars		Pag. 11
Antivibration Mounting with a Square Base		Pag. 12
Safeted Mount with a Passer-by Hole		Pag. 12

"Bell" Antivibration Mountings		Pag. 13
"Bell" Antivibration Mounting with a Rectangular		Pag. 14
Type-HS Antivibration Mounting		Pag. 15
"Cone" Antivibration Mountings with an Oval Base		Pag. 16
"Cone" Antivibration Mountings with a Rectangular Base		Pag. 17
Rubber safeted mount		Pag. 18
"Cone" Antivibration Mounting with a Cylindrical Base		Pag. 18
Trapezoidal Antivibration Mounting		Pag. 19
Elastic Bushes		Pag. 20
Type W-Y Antivibration Mountings		Pag. 21
Safeted Mounts		Pag. 22
Rubber Plates		Pag. 22

---

U-Shaped Vibration Insulator



Pag. 23

---

Antivibration Mountings for Ceiling



Pag. 24

---

“Sucker” Antivibration Feet



Pag. 25

---

Antivibration Feet for Machine Tools



Pag. 25

---

Conical - Trunk/Buffers



Pag. 25

---

Antivibration Feet with a Square Base



Pag. 26

---

“Sea” Antivibration Mountings



Pag. 26

---

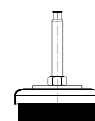
“Sea” Antivibration Mountings



Pag. 26

---

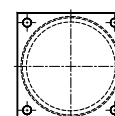
Levelling Mounts



Pag. 27

---

Multiplate Antivibration Mountings with a Square Base



Pag. 27

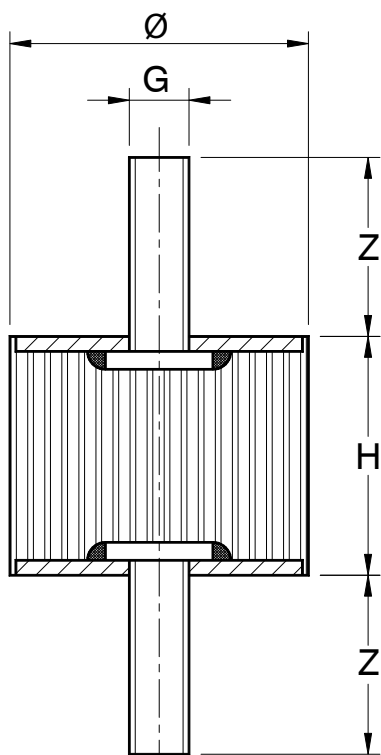
# Cylindrical Antivibration Mountings

Antivibration mountings with two fastening screws and white zinking.

## Type A-MM

Uses:

- Generators
- Electric Motors
- Instruments
- Agricultural Machineries



Code	Ø mm	H mm	G	Z mm	Max Load* (daN)
163	6	7	M3	5	2
164	8	8	M3	6	3
165	10	10	M4	10	7
166	15	8	M4	10	10
124	15	10	M4	10	10
125	15	15	M4	10	10
126	15	20	M4	10	10
127	15	25	M4	10	10
128	15	30	M4	10	10
169	20	8	M6	20	18
170	20	13	M6	20	18
114	20	15	M6	20	18
129	20	20	M6	20	18
115	20	25	M6	20	18
162	20	30	M6	20	18
130	25	15	M6	20	29
171	25	17	M6	20	29
101	25	20	M6	20	29
161	25	25	M6	20	29
131	25	30	M6	20	29
132	30	15	M8	25	42
116	30	20	M8	25	42
117	30	25	M8	25	42
111	30	30	M8	25	42
167	30	40	M8	25	42
103	30	15	M6/8	20/25	42
172	40	15	M8	25	75
160	40	20	M8	25	75
104	40	30	M8	25	75
134	40	35	M8	25	75
135	40	40	M8	25	75
136	40	45	M8	25	75
168	40	50	M8	25	75
138	50	20	M10	30	117

Code	Ø mm	H mm	G	Z mm	Max Load* (daN)
139	50	25	M10	30	117
106	50	30	M10	30	117
168/B	50	35	M10	30	117
140	50	40	M10	30	117
107	50	45	M10	30	117
141	50	50	M10	30	117
142	60	20	M12	40	169
118	60	30	M12	40	169
143	60	40	M12	40	169
112	60	50	M12	40	169
144	60	60	M12	40	169
145	65	50	M12	40	199
146	70	40	M12	40	230
147	70	45	M12	40	230
148	70	50	M12	40	230
149	75	25	M12	40	265
150	75	30	M12	40	265
108	75	40	M12	40	265
158	75	45	M12	40	265
109	75	50	M12	40	265
119	75	55	M12	40	265
151	75	60	M12	40	265
120	100	40	M16	47	471
110	100	50	M16	47	471
153	100	55	M16	47	471
121	100	60	M16	47	471
122	100	80	M16	47	471
154	100	100	M16	47	471
113	125	50	M16	45	736
155	125	60	M16	45	736
156	125	70	M16	45	736
123	125	80	M16	45	736
157	150	75	M16	45	1060
159	200	100	M20	45	1884

Standard hardness: 55 shore

On request: 45/65 shore

\* Under compression.

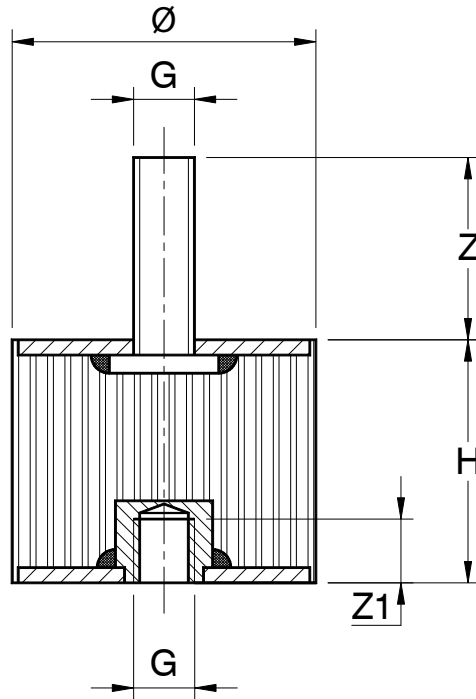
# Cylindrical Antivibration Mountings

Antivibration mountings with a fastening screw, a fastening nut and white zinking.

## Type B-MF

Uses:

- Generators
- Electric Motors
- Instruments
- Agricultural Machineries



Code	Ø mm	H mm	G	Z/Z1 mm	Max Load* (daN)
958	8	8	M3	6/3	3
959	10	10	M4	10/4	7
923	15	15	M4	10/4	10
924	15	20	M4	10/4	10
925	15	25	M4	10/4	10
926	15	30	M4	10/4	10
956	20	15	M6	20/6	18
927	20	20	M6	20/6	18
913	20	25	M6	20/6	18
957	20	30	M6	20/6	18
953	25	15	M6	20/6	29
901	25	20	M6	20/6	29
956/B	25	25	M6	20/6	29
928	25	30	M6	20/6	29
914	30	20	M8	25/7	42
915	30	25	M8	25/7	42
903	30	30	M8	25/7	42
960	30	40	M8	25/7	42
955	40	20	M8	25/7	75
904	40	30	M8	25/7	75
930	40	35	M8	25/7	75
931	40	40	M8	25/7	75
932	40	45	M8	25/7	75
961	40	50	M8	25/7	75
934	50	20	M10	30/7	117
935	50	25	M10	30/7	117
906	50	30	M10	30/7	117
961/B	50	35	M10	30/7	117
936	50	40	M10	30/7	117
907	50	45	M10	30/7	117

Code	Ø mm	H mm	G	Z/Z1 mm	Max Load* (daN)
937	50	50	M10	30/7	117
938	60	20	M12	40/10	169
916	60	30	M12	40/10	169
939	60	40	M12	40/10	169
908	60	50	M12	40/10	169
940	60	60	M12	40/10	169
941	65	50	M12	40/10	199
942	70	40	M12	40/10	230
943	70	45	M12	40/10	230
944	70	50	M12	40/10	230
945	75	25	M12	40/10	265
946	75	30	M12	40/10	265
917	75	40	M12	40/10	265
947	75	45	M12	40/10	265
909	75	50	M12	40/10	265
918	75	55	M12	40/10	265
948	75	60	M12	40/10	265
919	100	40	M16	47/16	471
910	100	50	M16	47/16	471
949	100	55	M16	47/16	471
920	100	60	M16	47/16	471
921	100	80	M16	47/16	471
911	100	100	M16	47/16	471
912	125	50	M16	45/18	736
950	125	60	M16	45/18	736
951	125	70	M16	45/18	736
922	125	80	M16	45/18	736
952	150	75	M16	45/18	1060
954	200	100	M20	45/21	1884

Standard hardness: 55 shore

On request: 45/65 shore

\* Under compression.

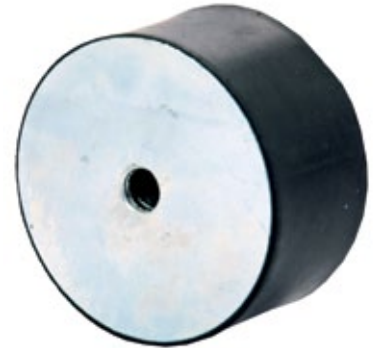
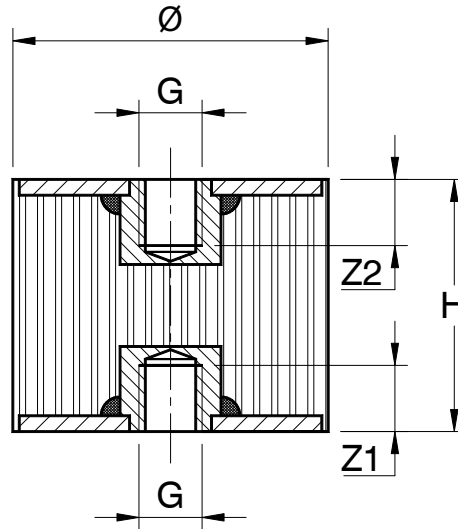
# Cylindrical Antivibration Mountings

Antivibration mountings with two fastening nuts and white zinking.

## Type C-FF

Uses:

- Generators
- Electric Motors
- Instruments
- Agricultural Machineries



Code	Ø mm	H mm	G	Z1/Z2 mm	Max Load* (daN)
1049	15	15	M4	4/4	10
1023	15	20	M4	4/4	10
1024	15	25	M4	4/4	10
1025	15	30	M4	4/4	10
1048	20	15	M6	6/6	18
1026	20	20	M6	6/6	18
1013	20	25	M6	6/6	18
1052	20	30	M6	6/6	18
1001	25	20	M6	6/6	29
1051	25	25	M6	6/6	29
1027	25	30	M6	6/6	29
1014	30	20	M8	7/7	42
1015	30	25	M8	7/7	42
1003	30	30	M8	7/7	42
1053	30	40	M8	7/7	42
1050	40	20	M8	7/7	75
1004	40	30	M8	7/7	75
1029	40	35	M8	7/7	75
1030	40	40	M8	7/7	75
1031	40	45	M8	7/7	75
1054	40	50	M8	7/7	75
1006	50	30	M10	7/7	117
1054/B	50	35	M10	7/7	117
1033	50	40	M10	7/7	117
1007	50	45	M10	7/7	117
1034	50	50	M10	7/7	117

Code	Ø mm	H mm	G	Z1/Z2 mm	Max Load* (daN)
1016	60	30	M12	10/10	169
1035	60	40	M12	10/10	169
1008	60	50	M12	10/10	169
1036	60	60	M12	10/10	169
1037	65	50	M12	10/10	199
1038	70	40	M12	10/10	230
1039	70	45	M12	10/10	230
1040	70	50	M12	10/10	230
1017	75	40	M12	10/10	265
1041	75	45	M12	10/10	265
1009	75	50	M12	10/10	265
1018	75	55	M12	10/10	265
1042	75	60	M12	10/10	265
1019	100	40	M16	16/16	471
1010	100	50	M16	16/16	471
1043	100	55	M16	16/16	471
1020	100	60	M16	16/16	471
1021	100	80	M16	16/16	471
1011	100	100	M16	16/16	471
1012	125	50	M16	18/18	736
1044	125	60	M16	18/18	736
1045	125	70	M16	18/18	736
1022	125	80	M16	18/18	736
1046	150	75	M16	18/18	1060
1047	200	100	M20	21/21	1884

Standard hardness: 55 shore

On request: 45/65 shore

\* Under compression.

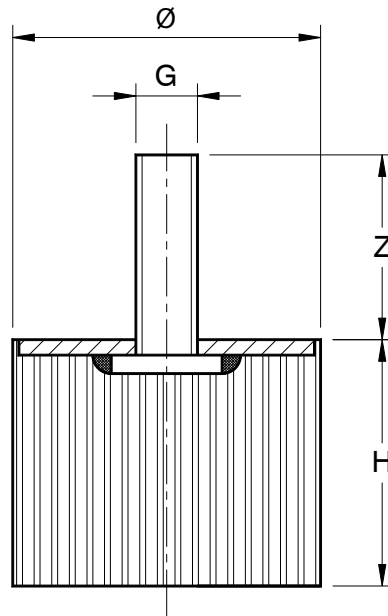
# Cylindrical Antivibration Mountings

Antivibration mountings with a fastening screw and white zinking.

## Type D-PM

Uses:

- Generators
- Electric Motors
- Instruments
- Agricultural Machineries



Code	Ø mm	H mm	G	Z mm	Max Load* (daN)
867	6	7	M3	5	2
868	8	8	M3	6	3
869	10	10	M4	10	7
870	15	8	M4	10	10
825	15	10	M4	10	10
826	15	15	M4	10	10
827	15	20	M4	10	10
828	15	25	M4	10	10
829	15	30	M4	10	10
874	20	8	M6	20	18
875	20	13	M6	20	18
830	20	15	M6	20	18
831	20	20	M6	20	18
811	20	25	M6	20	18
866	20	30	M6	20	18
801	25	15	M6	20	29
871	25	17	M6	20	29
812	25	20	M6	20	29
865	25	25	M6	20	29
832	25	30	M6	20	29
872	30	8	M8	25	42
876	30	10	M8	25	42
833	30	15	M8	25	42
814	30	20	M8	25	42
815	30	25	M8	25	42
803	30	30	M8	25	42
873	30	40	M8	25	42
877	40	10	M8	25	75
878	40	15	M8	25	75
861	40	20	M8	25	75
804	40	30	M8	25	75
835	40	35	M8	25	75
836	40	40	M8	25	75
837	40	45	M8	25	75
874/B	40	50	M8	25	75
863	50	10	M10	30	117
862	50	15	M10	30	117

Code	Ø mm	H mm	G	Z mm	Max Load* (daN)
839	50	20	M10	30	117
840	50	25	M10	30	117
805	50	30	M10	30	117
879	50	35	M10	30	117
841	50	40	M10	30	117
817	50	45	M10	30	117
842	50	50	M10	30	117
864	50	60	M8	24	117
843	60	20	M12	40	169
818	60	30	M12	40	169
844	60	40	M12	40	169
806	60	50	M12	40	169
845	60	60	M12	40	169
846	65	50	M12	40	199
847	70	40	M12	40	230
848	70	45	M12	40	230
849	70	50	M12	40	230
850	75	25	M12	40	265
851	75	30	M12	40	265
819	75	40	M12	40	265
852	75	45	M12	40	265
807	75	50	M12	40	265
820	75	55	M12	40	265
853	75	60	M12	40	265
821	100	40	M16	47	471
808	100	50	M16	47	471
854	100	55	M16	47	471
855	100	60	M16	47	471
809	100	80	M16	47	471
856	100	100	M16	47	471
823	125	50	M16	45	736
857	125	60	M16	45	736
858	125	70	M16	45	736
824	125	80	M16	45	736
859	150	75	M16	45	1060
860	200	100	M20	45	1884

Standard hardness: 55 shore

On request: 45/65 shore

\* Under compression.



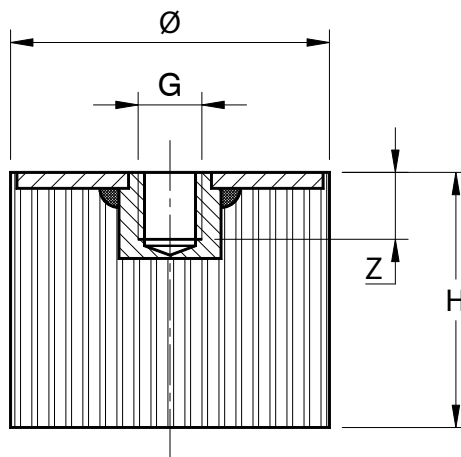
# Cylindrical Antivibration Mountings

Antivibration mountings with a fastening nut and white zinking.

## Type E-PF

Uses:

- Generators
- Electric Motors
- Instruments
- Agricultural Machineries



Code	Ø mm	H mm	G	Z mm	Max Load* (daN)
2070	6	7	M3	3	2
2061	8	8	M3	3	3
2062	10	10	M4	4	7
2023	15	15	M4	4	10
2024	15	20	M4	4	10
2025	15	25	M4	4	10
2026	15	30	M4	4	10
2057	20	15	M6	6	18
2027	20	20	M6	6	18
2001	20	25	M6	6	18
2060	20	30	M6	6	18
2002	25	15	M6	6	29
2064	25	17	M6	6	29
2003	25	20	M6	6	29
2058	25	25	M6	6	29
2028	25	30	M6	6	29
2005	30	20	M8	7	42
2006	30	25	M8	7	42
2007	30	30	M8	7	42
2063	30	40	M8	7	42
2056	40	20	M8	7	75
2008	40	30	M8	7	75
2030	40	35	M8	7	75
2031	40	40	M8	7	75
2032	40	45	M8	7	75
2065	40	50	M8	7	75
2034	50	20	M10	7	117
2035	50	25	M10	7	117
2010	50	30	M10	7	117
2064/B	50	35	M10	7	117
2036	50	40	M10	7	117

Code	Ø mm	H mm	G	Z mm	Max Load* (daN)
2011	50	45	M10	7	117
2037	50	50	M10	7	117
2038	60	20	M12	10	169
2012	60	30	M12	10	169
2039	60	40	M12	10	169
2013	60	50	M12	10	169
2040	60	60	M12	10	169
2041	65	50	M12	10	199
2042	70	40	M12	10	230
2043	70	45	M12	10	230
2044	70	50	M12	10	230
2045	75	25	M12	10	265
2046	75	30	M12	10	265
2014	75	40	M12	10	265
2047	75	45	M12	10	265
2015	75	50	M12	10	265
2016	75	55	M12	10	265
2048	75	60	M12	10	265
2017	100	40	M16	16	471
2018	100	50	M16	16	471
2049	100	55	M16	16	471
2050	100	60	M16	16	471
2019	100	80	M16	16	471
2051	100	100	M16	16	471
2021	125	50	M16	18	736
2052	125	60	M16	18	736
2053	125	70	M16	18	736
2022	125	80	M16	18	736
2054	150	75	M16	18	1060
2055	200	100	M20	21	1884

Standard hardness: 55 shore

On request: 45/65 shore

\* Under compression.

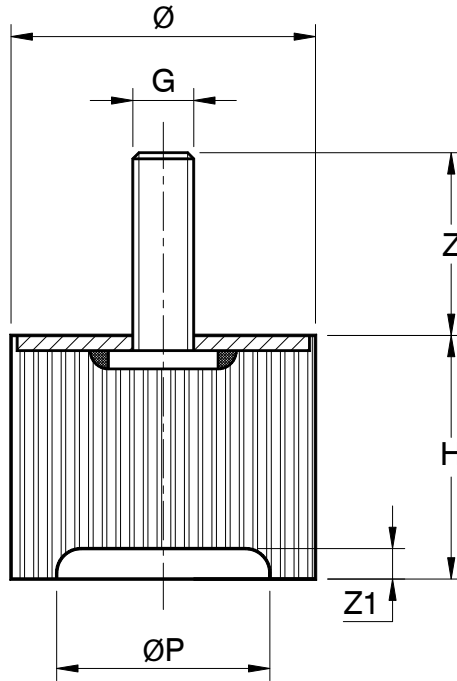
# Cylindrical Antivibration Mountings

Antivibration feet with a “sucker” and white zinking.

## Type PMV

Uses:

- Generators
- Electric Motors
- Instruments
- Agricultural Machineries



Code	Ø mm	H mm	G	Z mm	Ø Pmm	Z1 mm
PMV6000	30	20	M8	25	16	4
PMV6001	30	30	M8	25	16	4
PMV6002	40	20	M8	25	24	4
PMV6003	40	30	M8	25	24	4
PMV6004	40	35	M8	25	24	4
PMV6005	50	20	M10	30	35	4
PMV6006	50	25	M10	30	35	4
PMV6007	50	30	M10	30	35	4
PMV6008	60	30	M12	40	45	4
PMV6009	60	40	M12	40	45	4
PMV6010	70	40	M12	40	45	4
PMV6011	75	25	M12	40	45	4
PMV6012	75	40	M12	40	45	4
PMV6013	100	40	M16	47	60	4
PMV6014	125	50	M16	45	90	4
PMV6015	150	75	M16	45	100	4
PMV6016	200	100	M20	45	120	4

*This article can be produced on request in 45-55-65 shore.*

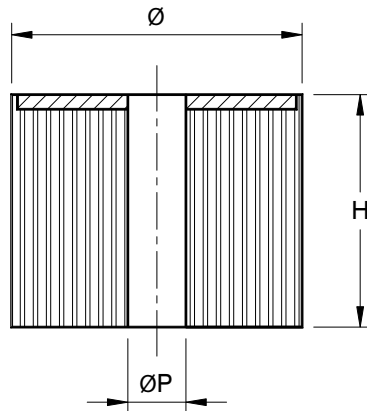
## Cylindrical Antivibration Mountings

Cylindrical antivibration mounting with a passer-by hole and a white zinked washer.

### Type PFC

Uses:

- Generators
- Electric Motors
- Instruments
- Agricultural Machineries



Code	Ø mm	H mm
6100	30	20
6101	30	30
6102	40	20
6103	40	30
6104	40	40
6105	50	20
6106	50	30
6107	50	40
6108	60	20
6109	60	30
6110	60	40
6111	70	40
6112	75	25
6113	75	30
6114	75	40
6115	100	40

The size of the central hole can be designed and produced on customer's request (hole's diameter ØP).

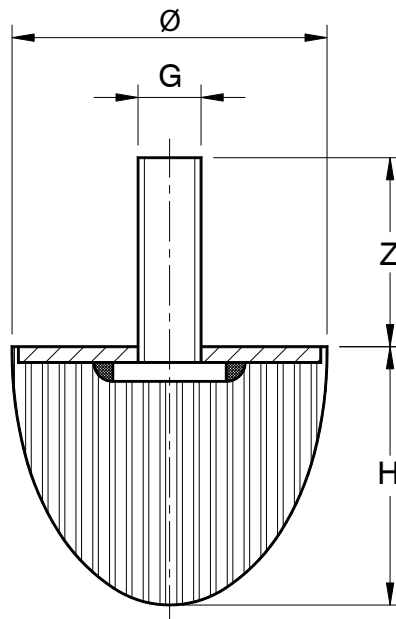
## Conical Antivibration Mountings

Antivibration mountings with a fastening screw and white zinking.

### Type PC

Uses:

- Bump stop



Code	Ø mm	H mm	G	Z mm	Max Load* (daN)
300	20	25	M6	20	20
301	25	17	M6	20	20
302	25	19	M6	20	20
303	25	22	M6	20	20
335	25	25	M6	20	20
304	30	14	M8	25	34
305	30	30	M8	25	34
334	30	36	M8	25	34
327	40	30	M8	25	29
306	40	38	M8	25	39
307	40	60	M8	25	39
328	50	40	M10	30	57
308	50	50	M8	24	57
309	50	58	M8	24	57
310	50	61	M10	30	66
336	50	67	M8	24	66
329	60	50	M12	40	75
311	60	60	M12	40	75
312	70	46	M10	30	110
313	75	58	M12	40	110
322	76	76	M12	40	117
323**	100	80	M16	47	199
330	125	100	M16	45	340

Standard hardness: 55 shore

On request: 45/65 shore

\*Under compression

\*\* Ex conical antivibration mounting PC 96/96

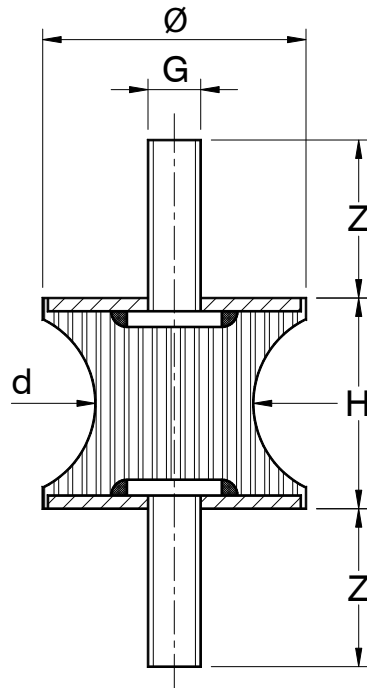
## “Sand-Glass” Antivibration Mountings

Antivibration mountings with two fastening screws and white zinking.

### Type CL

Uses:

- Generators
- Instruments
- Agricultural Machineries



Code	Ø mm	d mm	H mm	G	Z mm	Max Load* (daN)
224	20	10	15	M6	20	4
219	20	10	20	M6	20	4
225	25	10	20	M6	20	4
211	25	17	24	M6	20	13
212	30	15	20	M6	20	10
213	40	15	30	M8	25	10
214	40	20	30	M8	25	18
215	40	28	30	M8	25	37
216	50	30	30	M10	30	42
217	75	50	40	M12	40	117
218	80	70	70	M12	40	230

Standard hardness: 55 shore

On request: 45/65 shore

\* Under compression.

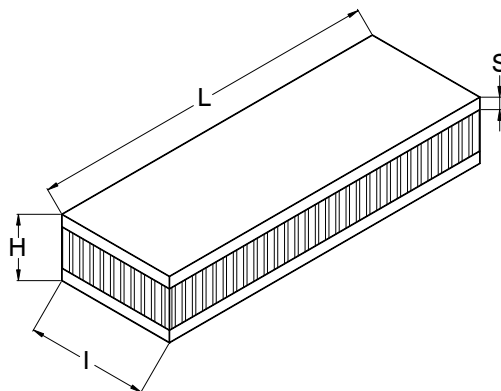
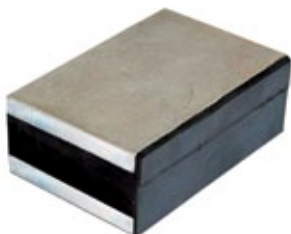
## Antivibration Bars

Antivibration bars

### Type BA

Uses:

- Generators
- Electric Motors
- Instruments
- Agricultural Machineries



Code	L mm	I mm	H mm	S mm	Max Load* (daN)
428	500	30	25	5	600
432	500	40	35	10	1200
433	500	40	40	10	1200
434	500	40	50	10	1500
435	500	50	40	10	1500
454	500	50	50	10	1500
436	500	60	60	10	1800
437	500	60	50	10	1800
438	500	60	40	10	1800
439	500	80	80	15	2400
440	500	80	60	15	2400
445	500	100	60	10	3000
446	500	100	60	15	3000
447	500	100	50	10	3000
448	500	100	50	15	3000
450	500	120	80	15	3600
451	500	120	60	15	3600
452	500	150	80	15	4500
453	500	150	60	15	4500

Standard hardness: 55 shore

On request: 45/65 shore

\* Under compression.

On request: This item can be produced with a single plate.

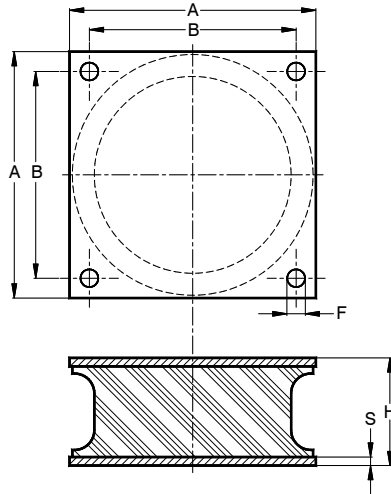
## Antivibration Mounting with a Square Base

Vulcanized plates for road rollers, compactors, presses and heavy duty machines.

### Type RUCOM

Uses:

- Engines
- Earthmoving machines



Code	Sizes				
	A mm	B mm	F mm	H mm	S mm
4100	150	126	11	65	8
4101	174	146	13	75	5
4102	180	145	13,5	85	6
4103	180	145	13,5	90	8

Standard hardness: 55 shore

On request: 45/65 shore

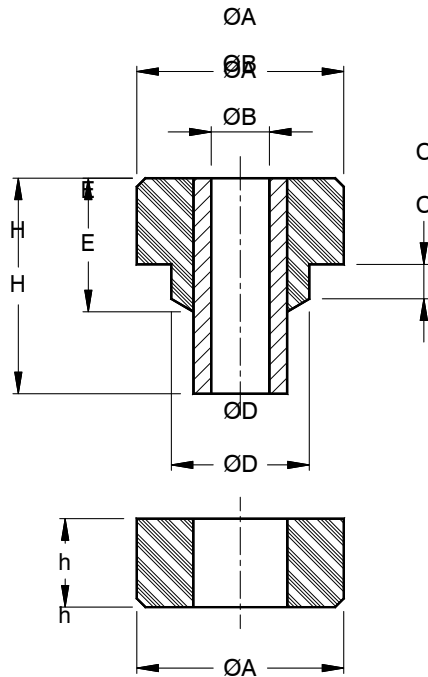
## Safeted Mount with a Passer-by Hole

This antivibration mounting is ideal for supporting compressive and tensile stress. Normally used in agricultural machineries' cabs and engines.

### Type COPAS

Uses:

- Engines
- Radiators
- Cabs



Code	Sizes							Rigidezza Media Average Stiffness (daN/mm)	Max load (daN)	Deformaz. Massima Max Deformation (mm)
	ØA mm	ØB mm	C mm	ØD mm	E mm	H mm	h mm			
4200	50	13	10	30	32	50	20	86	130	1,5
4201	65	16,5	16	42	42	61,7	23	140	260	1,9
4202	89	24	19	57	50,5	73	25	240	450	1,9

Standard hardness: 55 shore

On request: 45 shore

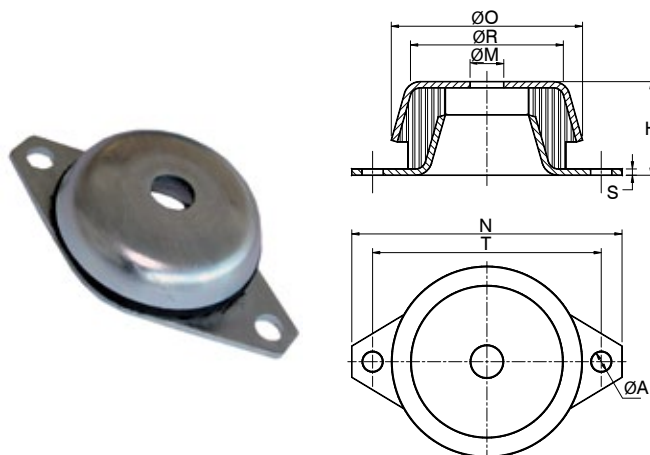
## “Bell” Antivibration Mountings

Uses:

- Electric boards and electric motors
- Generators
- Air-compressors
- Air-conditioning plants

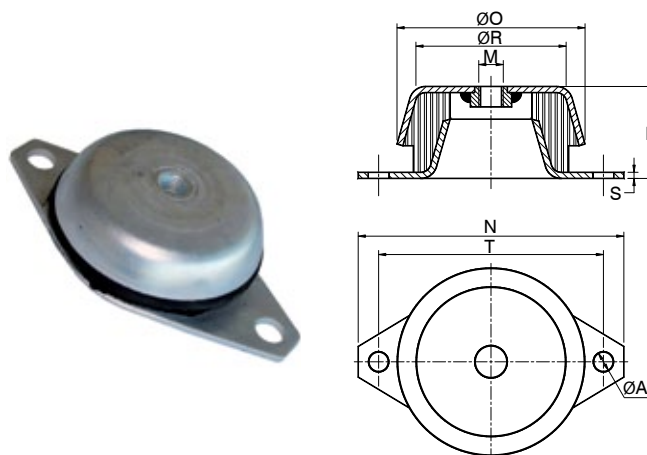


### With a passer-by hole



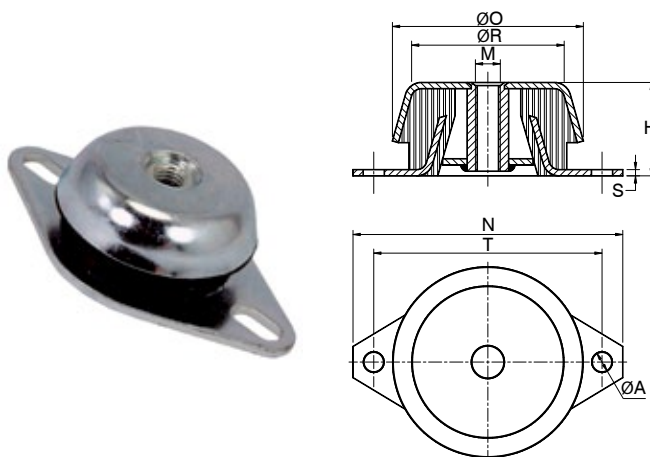
Code	Sizes								Statistics	
	ØO	ØR	ØM	ØA	N	T	H	S	Load**	Setting
	mm	mm	mm	mm	mm	mm	mm	mm		
3100	48	37,5	8,2	6,2	80	68	23	1,5	100	2,3
3101	62	50,0	10,2	8,2	100	85	30	2	175	3,0
3102	92	73,5	16,2	10,2	130	110	45	3	570	4,6
3105*	106	81,0	20	14x18	172	138x146	38	3	600	3,0
3103	119	98,5	24,2	16,2	190	160	50	5	1300	4,5

### With nut



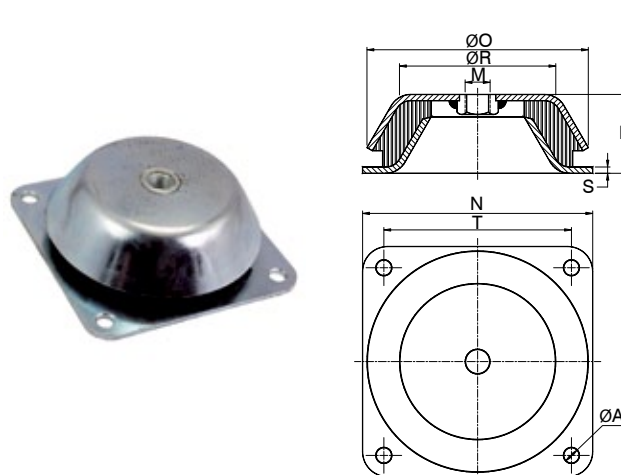
Code	Sizes								Statistics	
	ØO	ØR	M	ØA	N	T	H	S	Load**	Setting
	mm	mm	mm	mm	mm	mm	mm	mm		
3200	48	38,0	M8	6,2	80	68	23	1,5	100	2,3
3201	62	50,0	M10	8,2	100	85	30	2	175	3,0
3202	92	73,5	M12	10,2	130	110	45	3	570	4,6
3205*	106	81,0	M12	14x18	172	138x146	38	3	600	3,0
3203	119	98,5	M16	16,2	190	160	50	5	1300	4,5

### With pad



Code	Sizes								Statistics	
	ØO	ØR	M	ØA	N	T	H	S	Load**	Setting
	mm	mm	mm	mm	mm	mm	mm	mm		
3301	62	50,0	M10	8,2	100	85	30	2	175	3,0
3302	92	73,5	M12	10,2	130	110	45	3	570	4,6
3305*	106	81,0	M12	14x18	172	138x146	38	3	600	3,0
3303	119	98,5	M16	16,2	190	160	50	5	1300	4,5

### With a square base



Code	Sizes								Statistics	
	ØO	ØR	M	ØA	N	T	H	S	Load**	Setting
	mm	mm	mm	mm	mm	mm	mm	mm		
3406	150	110	M16	12,5	168	132	51,5	4	1000	2,5
3407	177	125	M20	13,0	184	150	63	5	1800	2,2

Standard hardness: 55 shore

On request: 45/65 shore

\* 2 oval clamping holes

\*\* Under compression

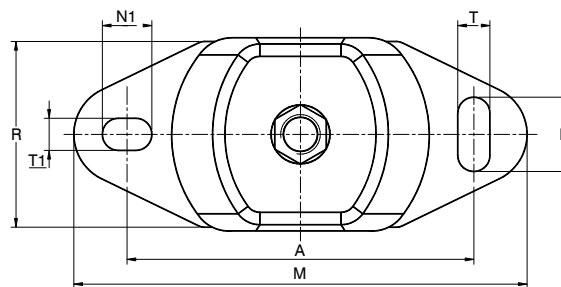
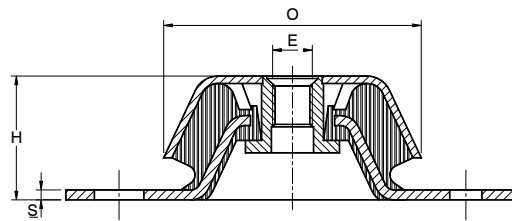
## “Bell” Antivibration Mounting with a Rectangular Cap

“Bell” antivibration mounting with a rectangular cap, two clamping holes and white zinking.

### Type SR

#### Uses:

- Generators
- Electric Motors
- Instruments
- Agricultural Machineries



Code	Hardness Shore A	O mm	R mm	M mm	A mm	NxT (N1xT1) mm	H mm	E mm	S mm	Max Load* daN
7500/45	40/45	80	60	120	100	14x11	38	M12	3	40
7500/50	47/53	80	60	120	100	14x11	38	M12	3	60
7500/60	55/60	80	60	120	100	14x11	38	M12	3	85
7500/70	65/70	80	60	120	100	14x11	38	M12	3	120
7501/35	35/40	104	75	183	140	30x13 (20x13)	49	M16	4	90
7501/45	40/45	104	75	183	140	30x13 (20x13)	49	M16	4	145
7501/60	55/60	104	75	183	140	30x13 (20x13)	49	M16	4	190
7501/70	65/70	104	75	183	140	30x13 (20x13)	49	M16	4	305
7501/80	75/80	104	75	183	140	30x13 (20x13)	49	M16	4	425
7502/45	40/45	132	112	230	182	34x18 (26x18)	71	M20	5	330
7502/60	55/60	132	112	230	182	34x18 (26x18)	71	M20	5	500
7502/70	65/70	132	112	230	182	34x18 (26x18)	71	M20	5	720
7502/80	75/80	132	112	230	182	34x18 (26x18)	71	M20	5	880

\* Under compression.

# Type-HS Antivibration Mounting

Dome-shaped antivibration mounting with a threaded hole and a white zinked plate suitable for application on the floor.

## Type HS

Uses:

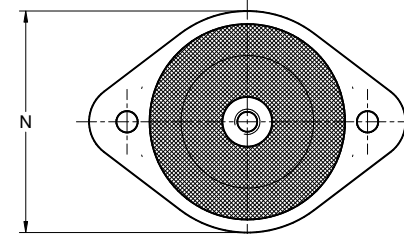
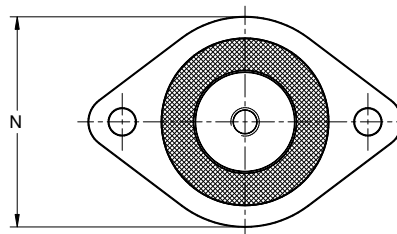
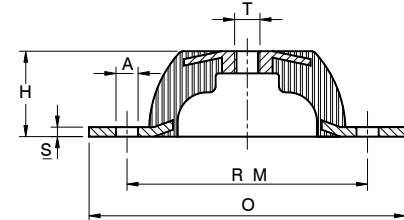
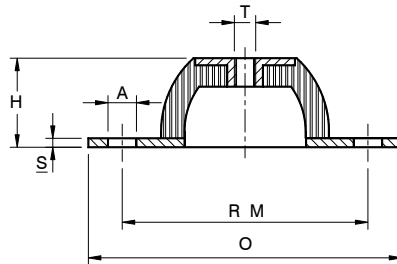
- Generators
- Electric Motors
- Instruments
- Agricultural Machineries



Type A



Type B



Code	Hardness Shore	O mm	RM mm	A mm	N mm	T mm	H mm	S mm	Max Load* (daN)	Type
4000/45	45	64	50	7	43	M6	20	2	5	A
4000/55	55	64	50	7	43	M6	20	2	9	A
4000/65	65	64	50	7	43	M6	20	2	17	A
4001/45	45	88	73-65	8x12	59	M8	25	2,5	27	A
4001/55	55	88	73-65	8x12	59	M8	25	2,5	44	A
4001/65	65	88	73-65	8x12	59	M8	25	2,5	75	A
4002/45	45	88	73-65	8x12	59	M10	25	2,5	27	A
4002/55	55	88	73-65	8x12	59	M10	25	2,5	44	A
4002/65	65	88	73-65	8x12	59	M10	25	2,5	75	A
4003/45	45	100	76	7	70	M8	27	3	75	B
4003/55	55	100	76	7	70	M8	27	3	120	B
4003/65	65	100	76	7	70	M8	27	3	165	B
4004/45	45	100	76	10	70	M8	27	3	75	B
4004/55	55	100	76	10	70	M8	27	3	120	B
4004/65	65	100	76	10	70	M8	27	3	165	B
4005/45	45	115	92	10	76	M10	35	2	40	B
4005/55	55	115	92	10	76	M10	35	2	75	B
4005/65	65	115	92	10	76	M10	35	2	135	B

\* Under compression / In compressione.

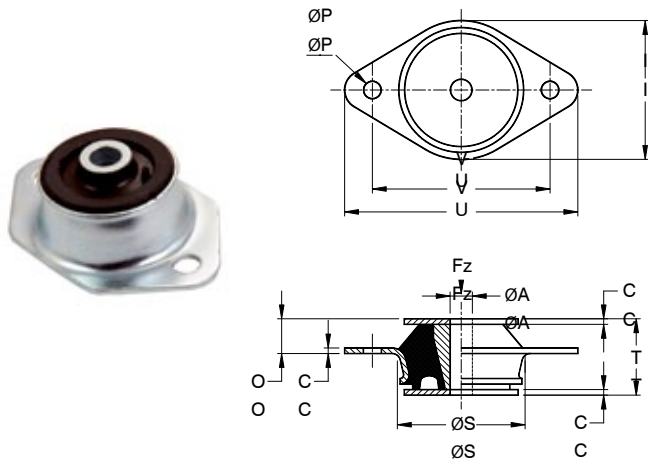


## “Cone” Antivibration Mountings with an Oval Base

“Cone” antivibration mountings with an oval base and white zinking.

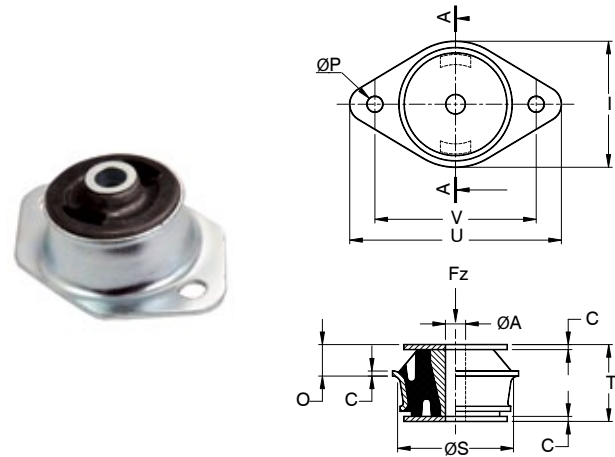
Uses:

- Generators
- Electric Motors
- Air-compressors
- Air-conditioning plants



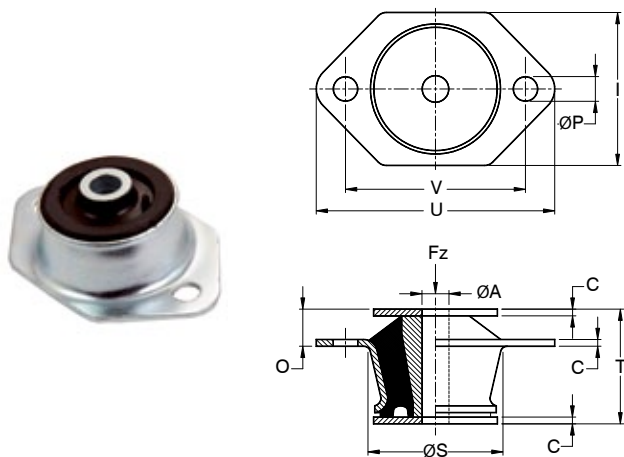
Code	Hardness	ØS	T	O	C	ØA	ØP	U	V	I	Load*
	Shore										
3500/45	45	46	27,5	12,5	2	8	6,5	84	64	50	40
3500/55	55	46	27,5	12,5	2	8	6,5	84	64	50	60
3500/65	65	46	27,5	12,5	2	8	6,5	84	64	50	100

Antivibration mounting supplied with two white zinked



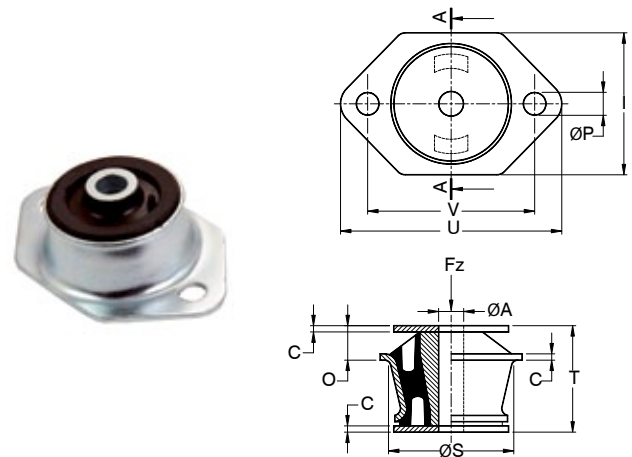
Code	Hardness	ØS	T	O	C	ØA	ØP	U	V	I	Load*
	Shore										
3502/45	45	46	30,5	12,5	2	8	6,5	84	64	50	30
3502/55	55	46	30,5	12,5	2	8	6,5	84	64	50	50
3502/65	65	46	30,5	12,5	2	8	6,5	84	64	50	70

Antivibration mounting supplied with two white zinked washers.



Code	Hardness	ØS	T	O	C	ØA	ØP	U	V	I	Load*
	Shore										
3504/45	45	60	51	16,5	2,5	12	11	106	80	68	100
3504/55	55	60	51	16,5	2,5	12	11	106	80	68	180
3504/65	65	60	51	16,5	2,5	12	11	106	80	68	280

Antivibration mounting supplied with two white zinked washers.



Code	Hardness	ØS	T	O	C	ØA	ØP	U	V	I	Load*
	Shore										
3506/45	45	60	51	16,5	2,5	12	11	106	80	68	80
3506/55	55	60	51	16,5	2,5	12	11	106	80	68	140
3506/65	65	60	51	16,5	2,5	12	11	106	80	68	215

Antivibration mounting supplied with two white zinked washers.

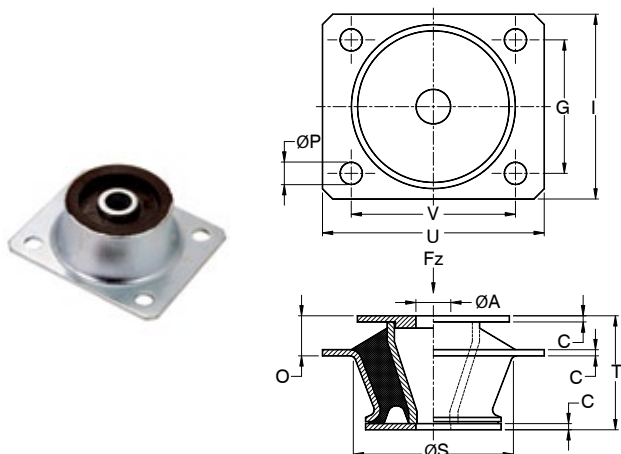
\* Under compression.

## “Cone” Antivibration Mountings with a Rectangular Base

“Cone” antivibration mountings with a rectangular base and white zinking.

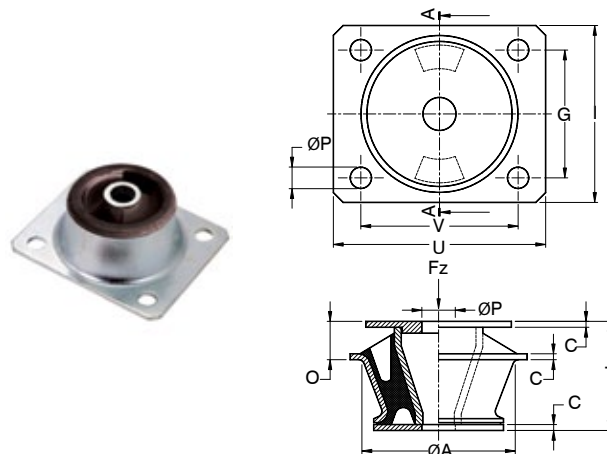
Uses:

- Generators
- Electric Motors
- Air-compressors
- Air-conditioning plants



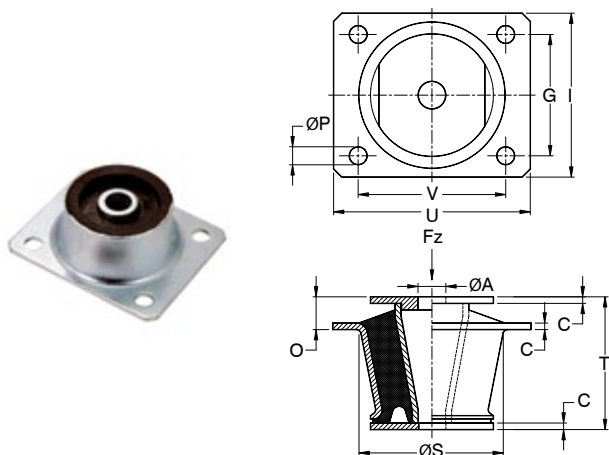
Code	Hardness	ØS	T	O	C	ØA	ØP	U	V	I	G	Load*
	Shore	mm	mm	mm	mm	mm	mm	mm	mm	mm	mm	
3600/45	45	78	56	19,5	3,5	16	11	107	80	90	65	180
3600/55	55	78	56	19,5	3,5	16	11	107	80	90	65	300
3600/65	65	78	56	19,5	3,5	16	11	107	80	90	65	440

Antivibration mounting supplied with two white zinked washers.



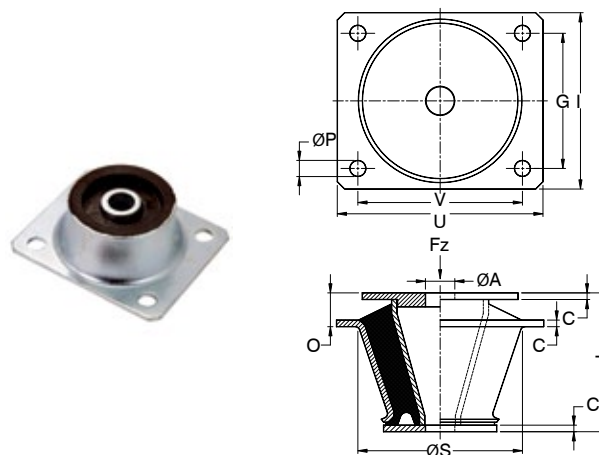
Code	Hardness	ØS	T	O	C	ØA	ØP	U	V	I	G	Load*
	Shore	mm	mm	mm	mm	mm	mm	mm	mm	mm	mm	
3602/45	45	78	56	19,5	3,5	16	11	107	80	90	65	25
3602/55	55	78	56	19,5	3,5	16	11	107	80	90	65	50
3602/65	65	78	56	19,5	3,5	16	11	107	80	90	65	70

Antivibration mounting supplied with two white zinked washers.



Code	Hardness	ØS	T	O	C	ØA	ØP	U	V	I	G	Load*
	Shore	mm	mm	mm	mm	mm	mm	mm	mm	mm	mm	
3604/45	45	87	81	20	4	16	11	120	90	100	74	400
3604/55	55	87	81	20	4	16	11	120	90	100	74	750
3604/65	65	87	81	20	4	16	11	120	90	100	74	1100

Antivibration mounting supplied with two white zinked washers.



Code	Hardness	ØS	T	O	C	ØA	ØP	U	V	I	G	Load*
	Shore	mm	mm	mm	mm	mm	mm	mm	mm	mm	mm	
3606/45	45	109	95	23	4,5	20	11	140	112	120	92	500
3606/55	55	109	95	23	4,5	20	11	140	112	120	92	1100
3606/65	65	109	95	23	4,5	20	11	140	112	120	92	1600

Antivibration mounting supplied with two white zinked washers.

\* Under compression.

## Rubber Safeted Mount

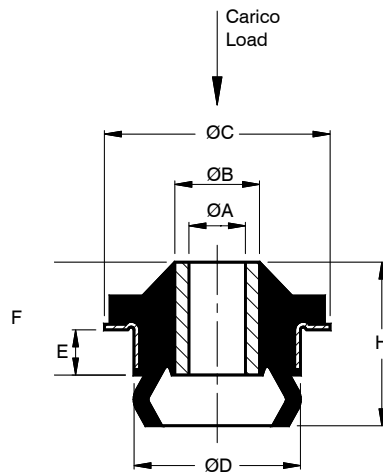
Antivibration mount ideal for supporting both compressive and tensile stress.

Normally used in agricultural machineries' cabs and engines.

### Type CLC

Uses:

- Engines
- Agricultural machineries' cabs



Code	Sizes							Max load (daN)	Deformaz. Massima Max Deformation (mm)
	ØA mm	ØB mm	ØC mm	ØD mm	E mm	F mm	H mm		
4500	16,2	25	80	59	16	40	58	1200	2,7
4501	20	30	80	59	16	40	58	1250	2,5

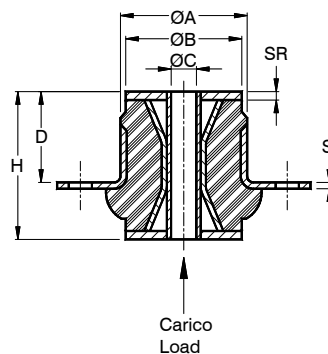
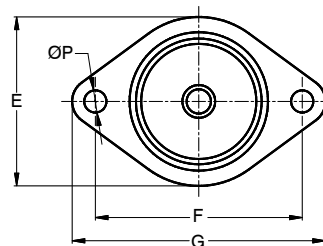
## “Cone” Antivibration Mounting with a Cylindrical Base

“Cone” antivibration mountings with a cylindrical base and white zinking.

### Type PASCON

Uses:

- Engines
- Agricultural machineries' cabs



Code	Sizes											Rigidezza Media Average Stiffness (daN/mm)	Max load (daN)	Deformaz. Massima Max Deformation (mm)
	ØA mm	ØB mm	ØC mm	D mm	E mm	F mm	G mm	H mm	S mm	SR mm	ØP mm			
4300	60	55	12	43	80	98	120	70	3	4	11	65	455	7
4301	72	65	16	53	95	106	130	80	4	4	11	95	570	6

Standard hardness: 55 shore

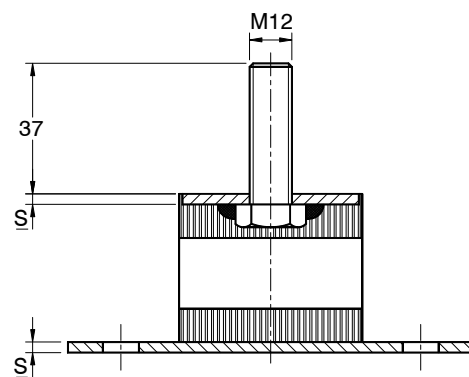
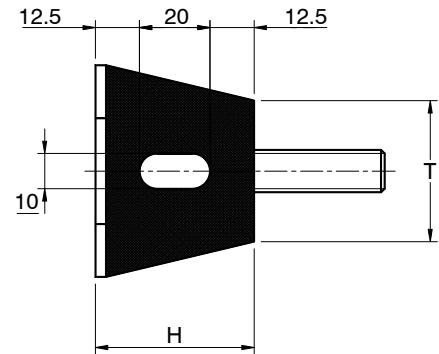
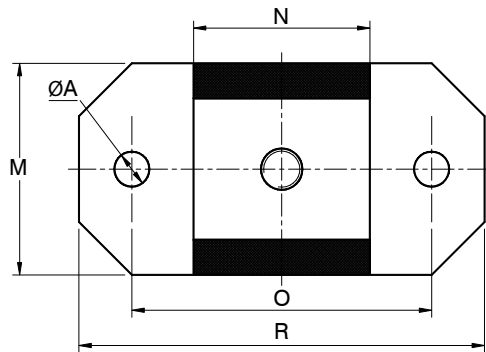
On request: 45/65 shore

## Trapezoidal Antivibration Mounting

This antivibration mounting is ideal for supporting longitudinal and vertical loads. It is made of two metal plates with white zinking, divided by a trapezoidal rubber section with a central hole.

### Uses:

- Generators
- Electric Motors
- Instruments
- Agricultural Machineries



Code	Hardness Shore A	O mm	R mm	M mm	ØA mm	N mm	T mm	H mm	S mm	Max Load* daN
7400	55	85	115	60	13,2	50	40	45	3	150
7401	55	135	165	60	13,2	100	40	45	3	320
7402	55	185	215	60	13,2	150	40	45	3	460

Standard hardness: 55 shore

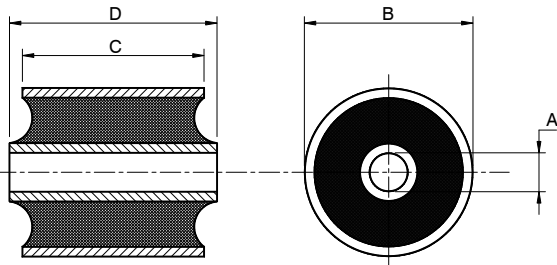
\* Under compression.

# Elastic Bushes

The elastic bushes are made of two concentric steel pipes divided by a rubber core.

**Uses:**

- Generators
- Electric Motors
- Instruments
- Agricultural Machineries



CODE	A	B	C	D
SVT7200	10	22	15	17
SVT7201	12	25	20	24
SVT7202	12	30	36	40
SVT7203	13	30	40	40
SVT7204	16	32	16	17
SVT7205	16	38	64	72
SVT7206	16	51	44	53
SVT7207	28	45	35	40
SVT7208	28	66	55	69

Totally vulcanized: Standard hardness 55 ± 5 shore A

Code	A	B	C	D
SVI7000	10	22	15	17
SVI7001	10	22	20	23
SVI7002	10	24	34	41
SVI7003	10	27	17	22
SVI7004	10	30	45	49
SVI7006	12	24	35	38
SVI7007	12	32	34	40
SVI7008	12	40	58	56
SVI7009	12	42	75	82
SVI7010	13	27	38	44
SVI7011	14	27	17	25
SVI7012	14	27	50	56
SVI7013	14	29	32	44
SVI7014	14	30	25	30
SVI7015	14	30	45	49
SVI7016	14	32	50	54
SVI7017	14	32	60	66
SVI7018	14	52	56	64
SVI7019	16	33	60	66
SVI7020	16	35	58	62
SVI7021	16	38	60	72
SVI7022	16	46	60	67
SVI7023	18	34	32	36
SVI7024	18	42	35	38
SVI7025	18	46	60	67
SVI7026	20	44	38	42
SVI7027	20	46	35	42
SVI7028	20	46	60	67
SVI7029	20	52	40	52
SVI7030	20	63	66	72
SVI7031	24	42	90	96
SVI7032	24	52	40	52
SVI7033	24	55	55	65
SVI7034	25	50	62	67
SVI7035	25	50	65	67
SVI7036	25	55	89	93
SVI7037	28	52	60	66
SVI7038	28	60	40	50
SVI7039	30	55	89	94
SVI7040	30	60	60	68
SVI7041	30	82	73	80
SVI7042	32	52	60	66
SVI7043	40	66	86	96
SVI7044	40	82	82	88
SVI7045	42	78	80	86
SVI7046	48	72	65	70
SVI7047	50	80	100	110
SVI7048	60	110	110	120
SVI7049	63,7	111	101	146
SVI7050	63,7	135	101	146
SVI7051	80	140	110	120
SVI7052	80	140	170	180
SVI7053	86	150	180	200
SVI7054	100	140	110	120
SVI7055	110	160	170	180
SVI7056	124	180	220	230
SVI7057	136	218	235	201

Vulcanized on inside bush: Standard hardness 65 ± 5 shore A

Code	A	B	C	D
SVN7301	8	20	15	17
SVN7302	8	32	18	23
SVN7303	8,5	28	16	16
SVN7304	10	22	18	24
SVN7305	10	22	25	30
SVN7306	10	24	18	24
SVN7307	10	25	20	24
SVN7308	10	25	20	30
SVN7309	10	26	23	35
SVN7310	10	27	45	51
SVN7311	10	27	50	56
SVN7312	10	28	20	27
SVN7313	10	28	23	53
SVN7314	10	30	24	30
SVN7315	10	32	30	34
SVN7316	10	34	31	41
SVN7317	10	36	38	50
SVN7318	12	25	35	44
SVN7319	12	25	40	44
SVN7320	12	25	45	51
SVN7321	12	26	20	24
SVN7322	12	26	23	27
SVN7323	12	26	32	36
SVN7324	12	27	40	48
SVN7325	12	27	50	56
SVN7326	12	27	74	80
SVN7327	12	28	30	42
SVN7328	12	28	32	38
SVN7329	12	28	32	44
SVN7330	12	30	24	30
SVN7331	12	30	25	28
SVN7332	12	30	32	44
SVN7333	12	34	44	54
SVN7334	12	44	34	48
SVN7335	12	52	56	64
SVN7336	14	27	25	31
SVN7337	14	27	40	45
SVN7338	14	27	40	48
SVN7339	14	27	50	56
SVN7340	14	28	40	44
SVN7341	14	30	25	28
SVN7342	14	30	50	54
SVN7343	14	32	32	40
SVN7344	14	32	40	54
SVN7345	14	32	55	59
SVN7346	14	32	60	66
SVN7347	14	36	50	55
SVN7348	14	50	50	55
SVN7349	16	32	25	28
SVN7350	16	32	50	54
SVN7351	16	36	35	43
SVN7352	16	40	35	43
SVN7353	16	40	54	59
SVN7354	16	44	60	65
SVN7355	16	48	49	59
SVN7356	17	41	35	38
SVN7357	18	34	30	33
SVN7358	18	42	35	42
SVN7359	20	38	35	38
SVN7360	20	38	38	42
SVN7361	20	42	35	46
SVN7362	20	46	45	55
SVN7363	20	48	40	52
SVN7364	20	52	80	86
SVN7365	22	40	40	45
SVN7366	24	42	50	55
SVN7367	24	60	65	70
SVN7368	27	45	27	51
SVN7369	28	49	40	50
SVN7370	28	60	40	50
SVN7371	28	60	65	80
SVN7372	32	56	50	55
SVN7373	44	64	46	52
SVN7374	63,5	111	102	146

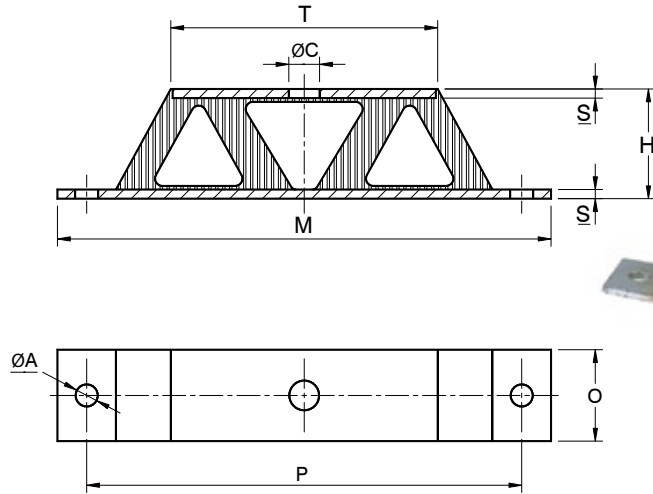
Pressed bushes not vulcanized: Standard hardness 65 ± 5 shore A

# Type W-Y Antivibration Mountings

Type W antivibration mounting with two white zinked plates.

Uses:

- Generators
- Electric Motors
- Instruments
- Agricultural Machineries

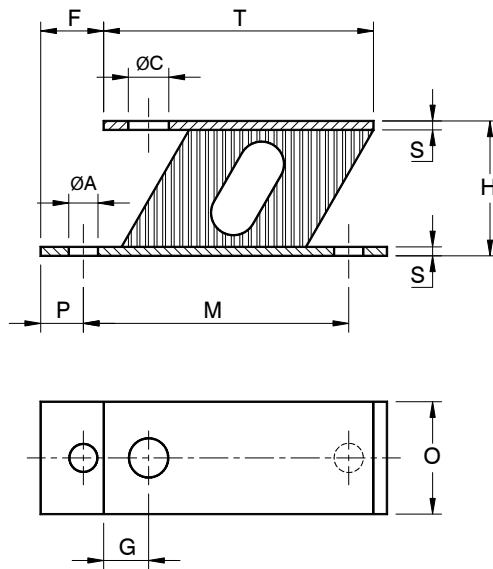


Code	Hardness Shore	M mm	T mm	O mm	ØC mm	ØA mm	P mm	H mm	S mm	Load* (daN)
5500/45	45	135	72	25	8,4	6,3	119	30	2,5	20
5500/55	55	135	72	25	8,4	6,3	119	30	2,5	40
5500/65	65	135	72	25	8,4	6,3	119	30	2,5	60

Type Y antivibration mounting with two white zinked plates.

Uses:

- Generators
- Electric Motors
- Instruments
- Agricultural Machineries



Code	Hardness Shore	M mm	T mm	O mm	C mm	ØA mm	P mm	F mm	G mm	H mm	S mm	Load* (daN)
5600/45	45	59	60	25	9	6,5	9,5	14	10	30	2	13
5600/55	55	59	60	25	9	6,5	9,5	14	10	30	2	24
5600/65	65	59	60	25	9	6,5	9,5	14	10	30	2	30

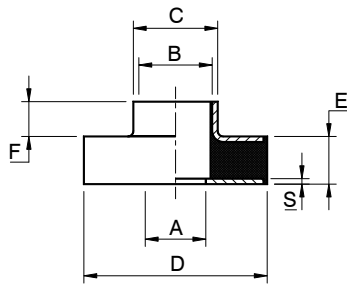
\* Under compression.

## Safeted Mounts

Antivibration mounting with two white zinked washers and a central rubber core. It is ideal for supporting shearing and compressive stress.

Uses:

- Generators
- Instruments
- Agricultural Machineries



Code	Hardness Shore	A mm	B mm	C mm	D mm	E mm	F mm	S mm	Load* (daN)
5000/45	45	8,5	12	18	36	10	4	1,5	60
5000/55	55	8,5	12	18	36	10	4	1,5	110
5000/65	65	8,5	12	18	36	10	4	1,5	150
5001/45	45	16,6	16,6	20	36	8	3	1,5	60
5001/55	55	16,6	16,6	20	36	8	3	1,5	110
5001/65	65	16,6	16,6	20	36	8	3	1,5	150
5002/45	45	16,5	20	23	50	13	9,5	1,5	160
5002/55	55	16,5	20	23	50	13	9,5	1,5	220
5002/65	65	16,5	20	23	50	13	9,5	1,5	270
5003/45	45	20,5	24	27	60	13	10,5	1,5	280
5003/55	55	20,5	24	27	60	13	10,5	1,5	370
5003/65	65	20,5	24	27	60	13	10,5	1,5	430
5004/55	55	21	24	27	60	30	4	1,5	245

## Rubber Plates

Punched or vulcanized black plate in natural rubber. It can be produced on customers' request.

Uses:

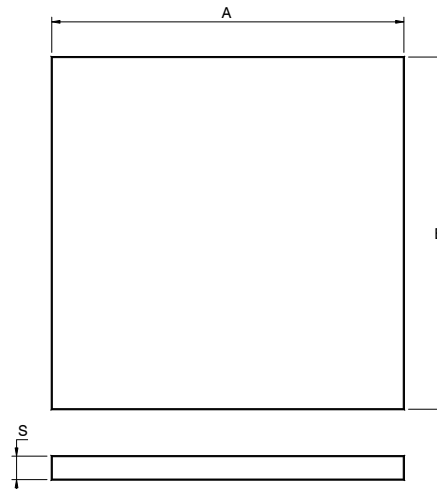
- Generators
- Instruments
- Agricultural Machineries



Max sizes: width 1.300mm, length 10.000 mm and thickness 2÷6 mm.

Standard hardness 65±5 shore.

On request: 40 to 95 shore.



\*Under compression

# U-Shaped Vibration Insulator

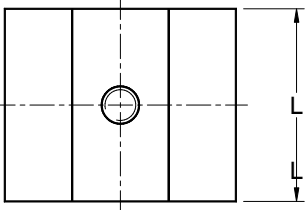
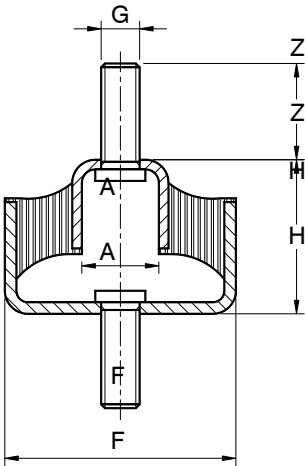
The U-shaped vibration insulator is able to work both under compression and under cut.

Uses:

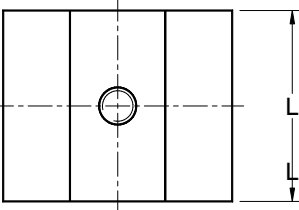
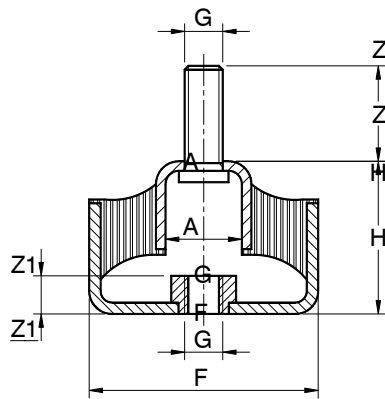
- Generators
- Electric Motors
- Instruments
- Agricultural Machineries



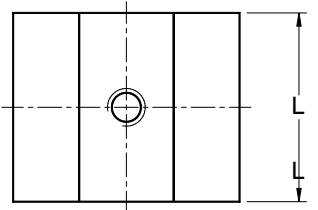
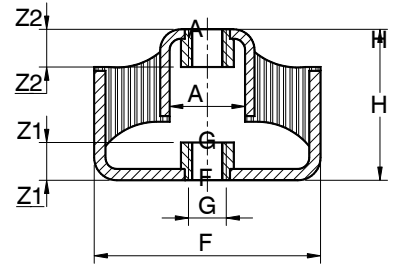
## Type U-MM



## Type U-MF



## Type U-FF



Type	Code	Hardness Shore A	F mm	L mm	G mm	H mm	Z mm	Z1 mm	Z2 mm	A mm	Load* daN	Setting mm
U-MM	5700/45	45	60	50	M10	40	25	-	-	20	70	6
U-MM	5700/55	55	60	50	M10	40	25	-	-	20	110	6
U-MM	5700/65	65	60	50	M10	40	25	-	-	20	150	6
U-MF	5701/45	45	60	50	M10	40	25	7	-	20	70	6
U-MF	5701/55	55	60	50	M10	40	25	7	-	20	110	6
U-MF	5701/65	65	60	50	M10	40	25	7	-	20	150	6
U-FF	5702/45	45	60	50	M10	40	-	7	7	20	70	6
U-FF	5702/55	55	60	50	M10	40	-	7	7	20	110	6
U-FF	5702/65	65	60	50	M10	40	-	7	7	20	150	6

\*Under compression



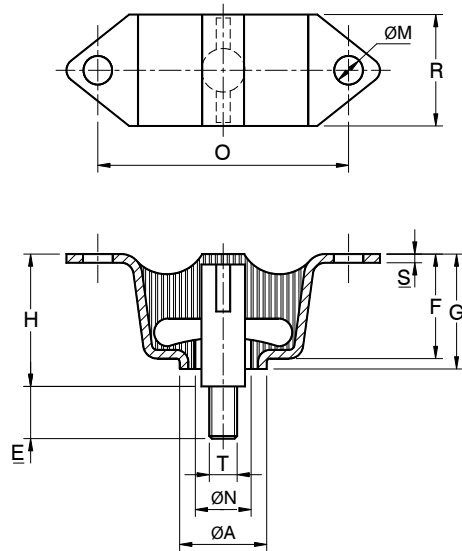
## Antivibration Mountings for Ceiling

This metal to rubber bonded antivibration mounting can be used for applications on ceiling.

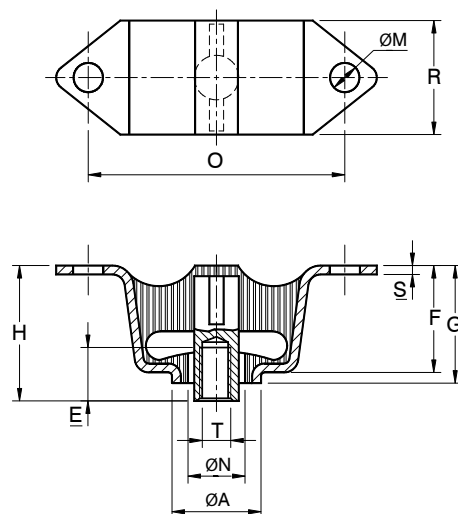
Thanks to a central metal plate, it is highly resistant to a tensile stress, and ideal for supporting violent tearings.

### Uses:

- Generators
- Electric Motors
- Instruments
- Agricultural Machineries



Code	Hardness Shore A	O mm	R mm	ØM mm	ØA mm	ØN mm	T mm	H mm	E mm	S mm	F mm	G mm	Load* daN	Setting mm
7800/45	45	72	32	8,5	25	16	M8	38	15	2,5	30	33	60	9
7800/60	60	72	32	8,5	25	16	M8	38	15	2,5	30	33	100	9
7800/70	70	72	32	8,5	25	16	M8	38	15	2,5	30	33	150	9



Code	Hardness Shore A	O mm	R mm	ØM mm	ØA mm	ØN mm	T mm	H mm	E mm	S mm	F mm	G mm	Load* daN	Setting mm
7801/45	45	72	32	8,5	25	16	M8	38	15	2,5	30	33	60	9
7801/60	60	72	32	8,5	25	16	M8	38	15	2,5	30	33	100	9
7801/70	70	72	32	8,5	25	16	M8	38	15	2,5	30	33	150	9

\* Under tensile stress.

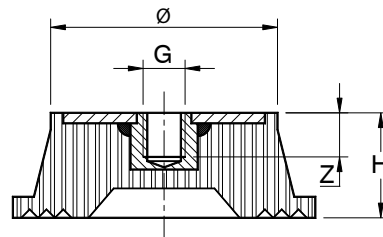
## “Sucker” Antivibration Feet

Antivibration feet with a fastening nut and white zinking.

### Type PV

Uses:

- Compressors
- Electric motors



Code	Ø mm	H mm	G	Z mm	Max Load* (daN)
325	30	20	M8	7	25
326	55	25	M8	7	85
331	75	50	M12	10	159
332	100	50	M16	16	282
333	125	70	M16	18	440

Standard hardness: 55 shore

On request: 45/55/65 shore

\* Under compression.

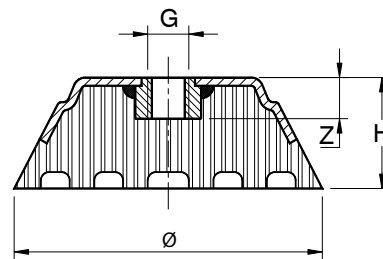
## Antivibration Feet for Machine Tools

Antivibration feet with a fastening nut and white zinking.

### Type F

Uses:

- Machine tools



Code	Ø mm	H mm	G	Z mm	Max Load* (daN)
2101	75	25	M10	12	300
2102	100	30	M12	12	550
2103	125	40	M16	16	860
2104	150	50	M16	16	1230

Standard hardness: 70 shore

On request : 45/55/65 shore

\* Under compression.

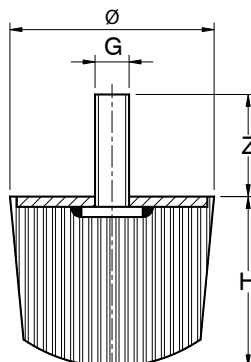
## Conical - Trunk/Buffers

Antivibration mountings with a fastening screw and white zinking.

### Type PT

Uses:

- Bump stop



Code	Ø mm	H mm	G	Z mm	Max Load* (daN)
529	60	50	M12	40	170
530	80	60	M12	40	302
531	100	76	M16	47	471

Standard hardness: 75 shore

On request: 45/55/65 shore

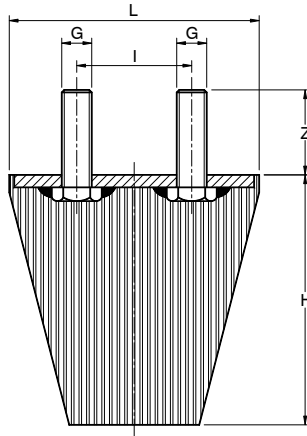
\* Under compression.

# Antivibration Feet with a Square Base

Antivibration feet with two fastening screws.

## Type PQ

- Uses:
- Generators
  - Industrial refrigerators



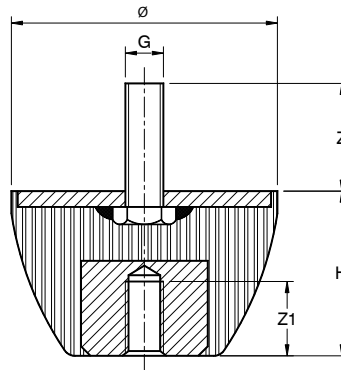
Code	L mm	H mm	I mm	v	Z mm
633	100	100	48	M12	35
634	125	125	50	M16	45

On request: 45/55/65 shore  
Standard hardness: 75 shore

# “Sea” Antivibration Mountings

Antivibration mountings with a fastening nut and a fastening screw.

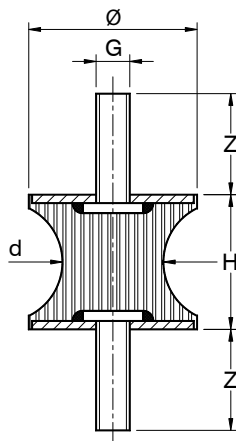
- Uses:
- Sea motors



Code	Ø mm	H mm	G	Z mm	Z1 mm
735	80	50	M12/12	40	28
736	110	75	M16/16	65	34

On request: 45/55/75 shore  
Standard hardness: 65 shore

- Uses:
- Sea motors



Antivibration mountings with two fastening screws and white zinking.

Code	Ø mm	d mm	H mm	G	Z mm
737	80	70	70	M14	37

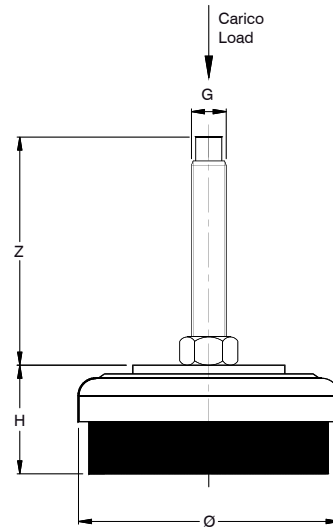
On request: 45/55/75 shore  
Standard hardness: 65 shore

# Levelling Mounts

Antivibration feet for machines and equipments with loads applied from 500 daN to 4000 daN.

## Type POG

- Uses:
- Machine tools



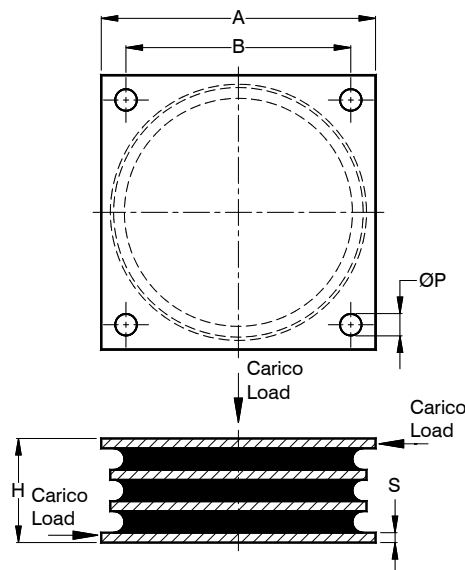
Code	Hardness (IRHD)	Sizes						Average Stiffness (daN/mm)	Max load (daN)	Max Deformation (mm)
		Ø mm	H min mm	H max mm	G mm	Z min mm	Z max mm			
4400	80	80	35	46	M12x1,25	87	98	250	500	2,0
4401	80	120	40	51	M16x1,5	93	104	400	1000	2,5
4402	80	160	50	63	M20x1,5	125	138	900	2000	2,2
4403	80	200	60	73	M20x1,5	125	138	1500	4000	2,7

# Multiplate Antivibration Mountings with a Square Base

These antivibration mountings are suitable for insulating noises and vibrations produced by vertical loads.

## Type MACOM

- Uses:
- Engines
  - Agricultural machineries
  - Earthmoving machines



Code	Hardness (IRHD)	Sizes					Average stiffness under compression (daN/mm)	Max load under compression (daN)	Average stiffness under shearing stress (daN/mm)	Max load under shearing stress (mm)
		A mm	B mm	ØP mm	H mm	S mm				
4600	60	166	136	13,5	63	6	1100	4950	23	580

